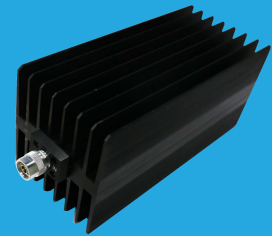


QFA18K25

DC~18GHz, 250W

Features:
 * Low VSWR
 * High Attenuation Flatness

Applications:
 * Wireless
 * Transmitter
 * Laboratory Test
 * Radar



Electrical

Frequency: DC~18GHz
 Attenuation: 10~60dB
 Impedance: 50Ω
 Average Power*1: 250W@25°C max.

[1] Derated linearly to 12.5W@120°C.

Mechanical

Size*2: 254*120*110mm
 10*4.72*4.33in

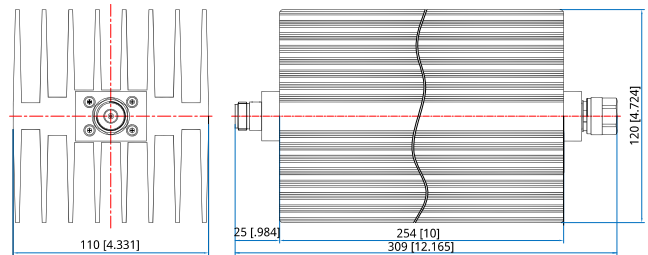
RF Connectors: N

[2] Exclude connectors.

Environmental

Temperature: -55~+125°C

Outline Drawings



Unit: mm [in]

Tolerance: ±2mm [±0.08in]

Attenuation Accuracy and VSWR

Frequency (GHz)	Attenuation Accuracy (±dB) vs. Attenuation (dB)					VSWR (max.)
	10	20	30	40	50~60	
DC~4	0.7	0.7	0.8	0.9	0.9	1.2
DC~8	0.8	0.8	0.9	0.9	0.9	1.25
DC~12.4	2.5	0.9	1.0	1.1	1.1	1.35
DC~18	3	-	1.5	1.3	1.4	1.45

How To Order

QFA18K25-X-Y-Z

X: Frequency in GHz

Y: Attenuation in dB

Z: Connector type

Examples:

To order an attenuator, DC~18GHz, N male to N female, 20dB attenuation, specify QFA18K25-18-20-N.

Connector naming rules:

N - N