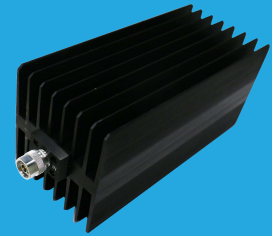


# QFA18K2

## DC~18GHz, 200W

Features:  
 \* Low VSWR  
 \* High Attenuation Flatness

Applications:  
 \* Wireless  
 \* Transmitter  
 \* Laboratory Test  
 \* Radar



### Electrical

Frequency: DC~18GHz  
 Attenuation: 10~60dB  
 Impedance: 50Ω  
 Average Power\*1: 200W@25°C max.

[1] Derated linearly to 10W@120°C.

### Mechanical

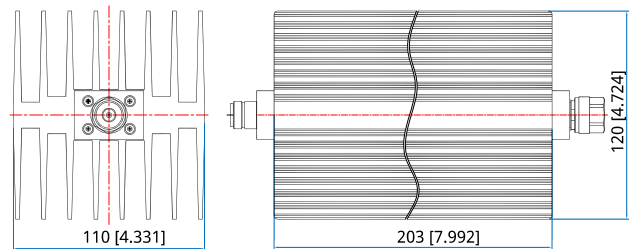
Size\*2: 203\*120\*110mm  
 7.992\*4.724\*4.331in  
 RF Connectors: N Male, N Female

[2] Exclude connectors.

### Environmental

Temperature: -55~+125°C

### Outline Drawings



Unit: mm [in]  
 Tolerance: ±2mm [±0.08in]

### Attenuation Accuracy and VSWR

Frequency (GHz)	Attenuation Accuracy (±dB) vs. Attenuation (dB)						VSWR (max.)
	10	20	30	40	50	60	
DC~4	0.7	0.7	0.8	0.9	0.9	0.9	1.20
DC~8	0.8	0.8	0.9	0.9	0.9	0.9	1.25
DC~12.4	0.9	0.9	1.0	1.1	1.1	1.1	1.35
DC~18	2.0	-	1.5	1.3	1.4	1.4	1.45

### How To Order

#### QFA18K2-X-Y-Z

X: Frequency in GHz  
 Y: Attenuation in dB  
 Z: Connector type

Connector naming rules:  
 N - N

#### Examples:

To order an attenuator, DC-18GHz, N male to N female, 30dB attenuation, specify QFA18K2-18-30-N.