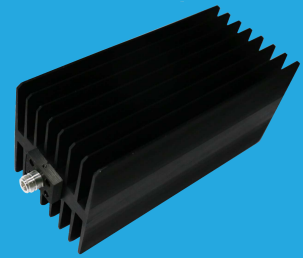


## QCT18K5

### DC~18GHz, 500W

Features:  
 \* Low VSWR  
 \* Broadband

Applications:  
 \* Transmitters  
 \* Antennas  
 \* Laboratory Test  
 \* Impedance Matching



#### Electrical

Frequency Range: DC~18GHz  
 Average Power\*1: 500W@25°C  
 Impedance: 50Ω

[1] Derated linearly to 25W@120°C.

#### VSWR

Frequency (GHz)	N	7/16 DIN
DC~4	1.2	1.2
DC~6	-	1.25
DC~8	1.25	-
DC~12.4	1.35	-
DC~18	1.6	-

#### Mechanical

Size\*2: 509\*120\*110mm  
 20.039\*4.724\*4.331in  
 Connector: N, 7/16 DIN

[2] Exclude connectors.

#### Environmental

Temperature: -55~+125°C

#### How To Order

##### QCT18K5-X-Y

X: Frequency in GHz

Y: Connector type

Connector naming rules:

N - N male(Outline A)

NF - N female

7 - 7/16 DIN male(Outline B)

7F - 7/16 DIN female

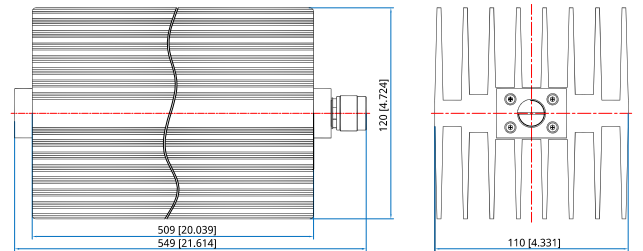
Examples:

To order a termination, DC-12.4GHz, N male, specify

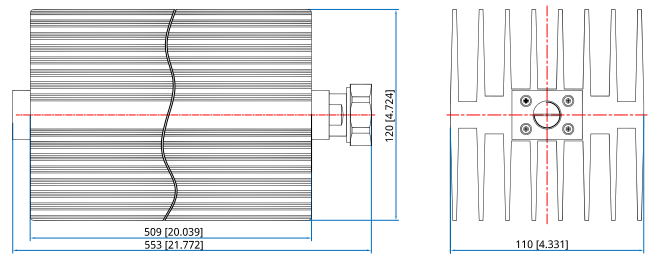
QCT18K5-12.4-N

Customization is available upon request.

#### Outline Drawings



Outline A



Outline B

Unit: mm [in]

Tolerance: ±1mm [±0.04in]